

Jobs, Entrepreneurship and Firm-Level Analysis

Carol Caldwell

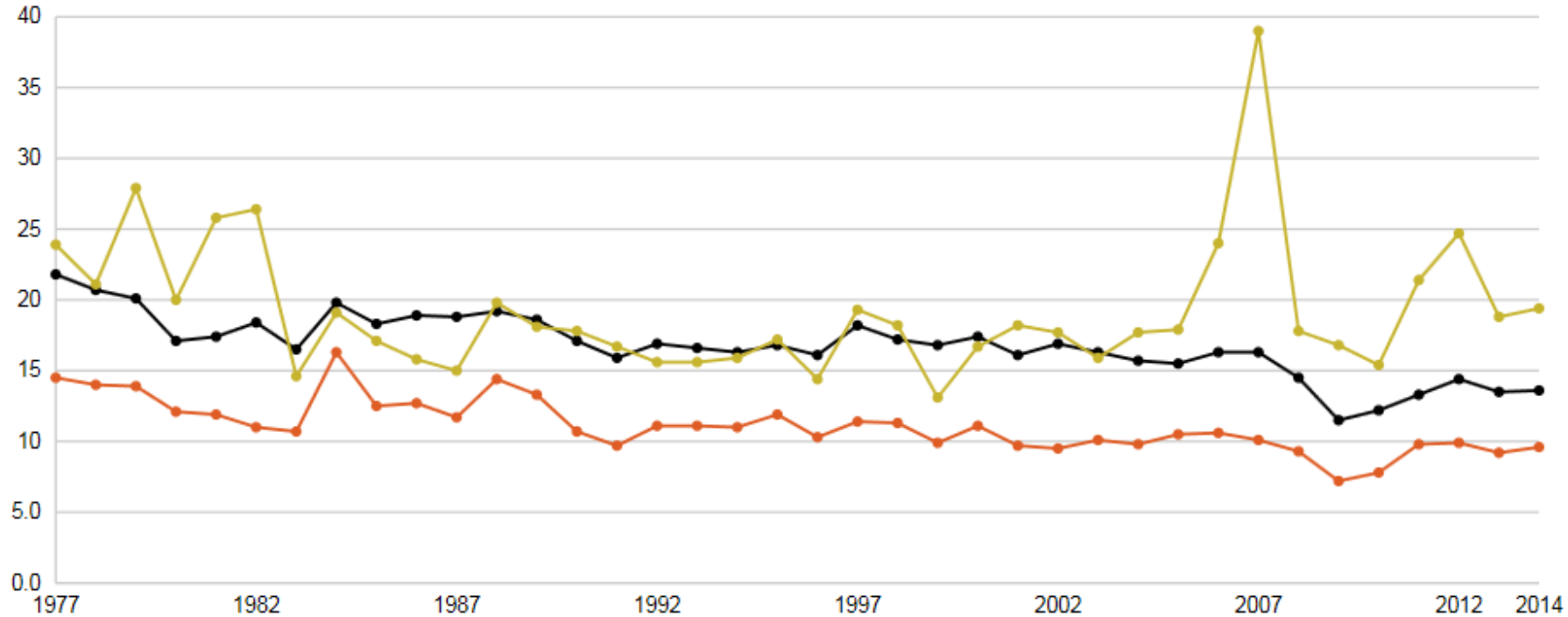
US Census Bureau

Ken Robertson

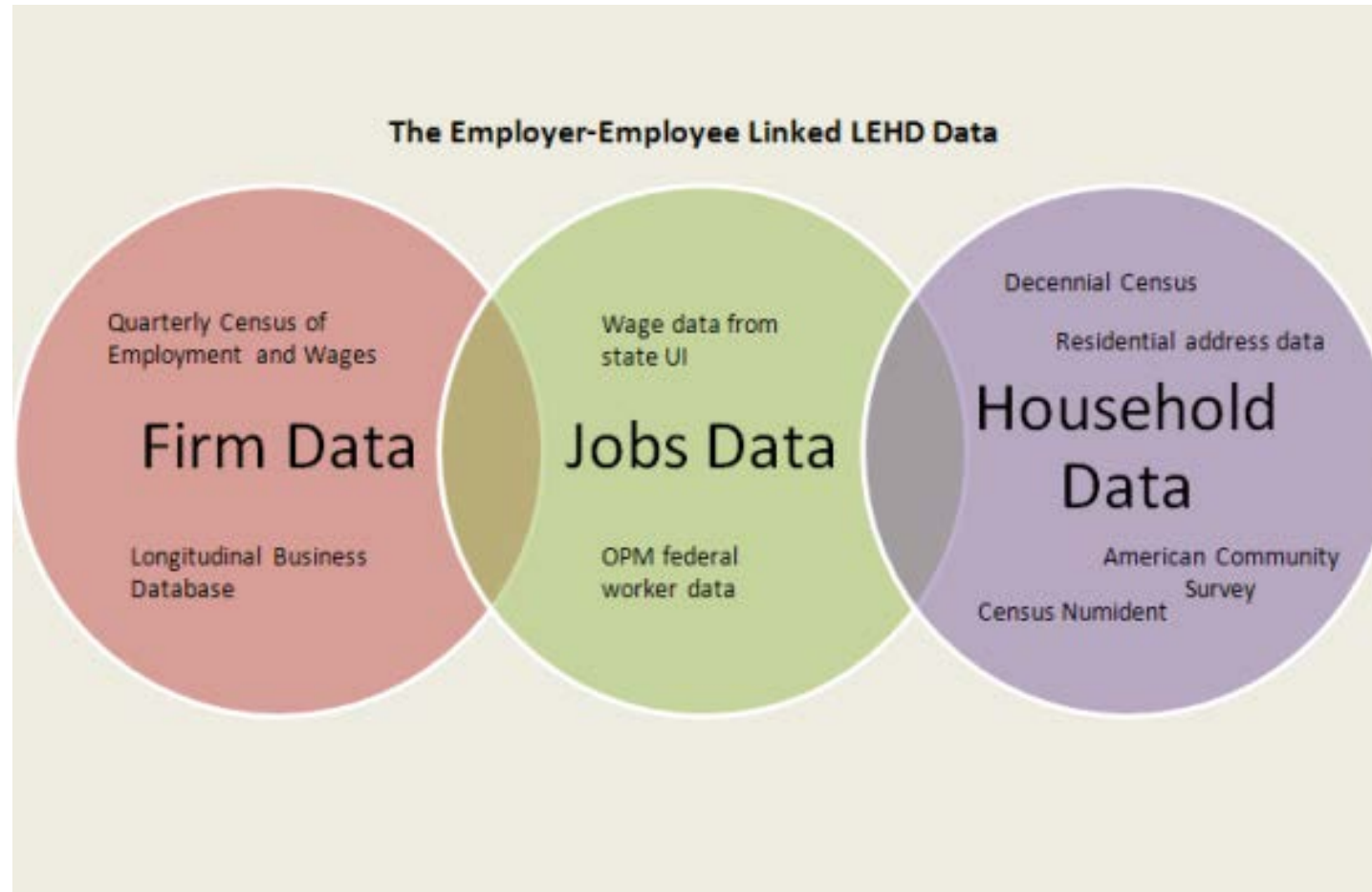
US Bureau of Labor Statistics

Business Dynamic Statistics

Job Creation Rate

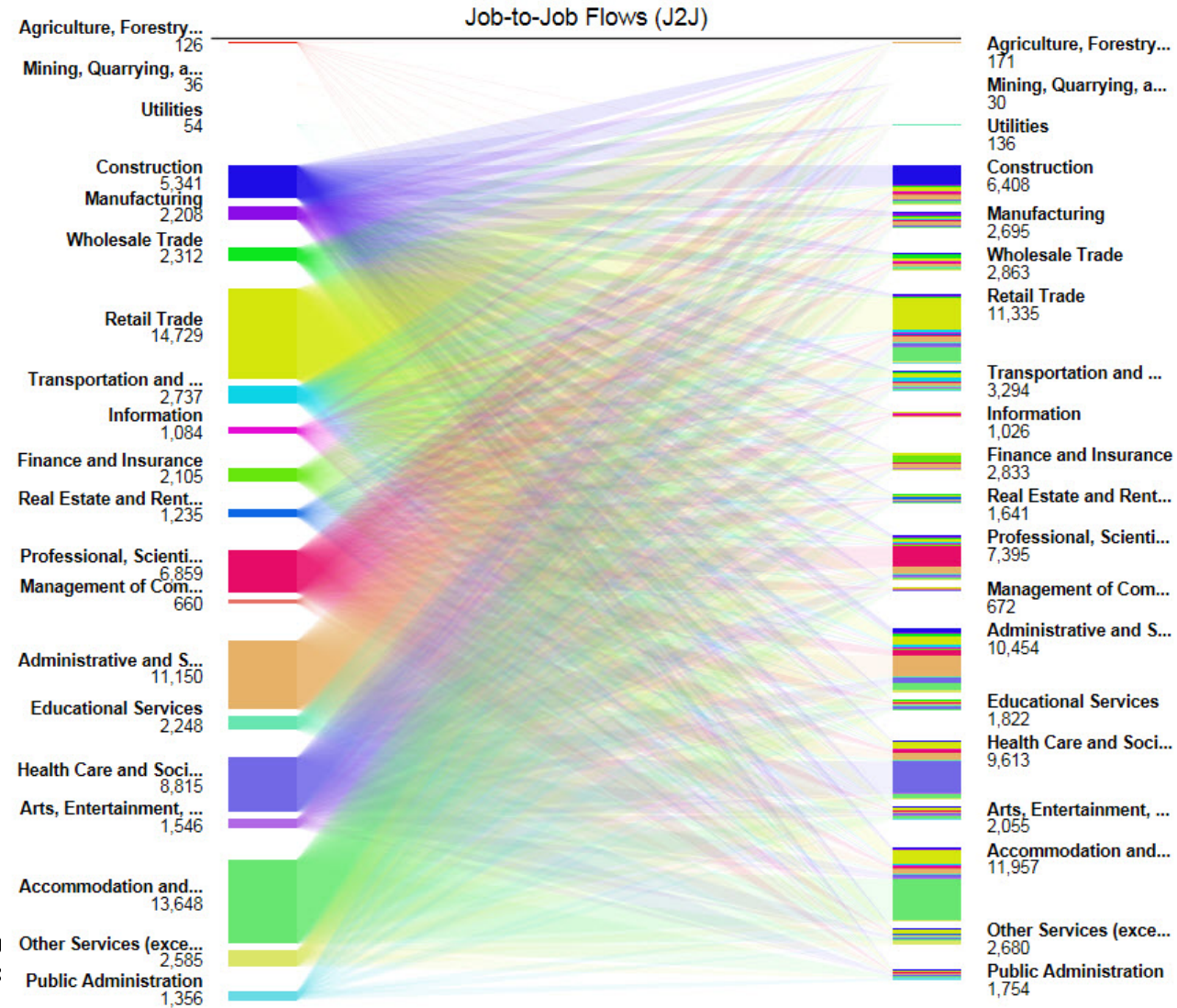


Longitudinal Employer Household Dynamics



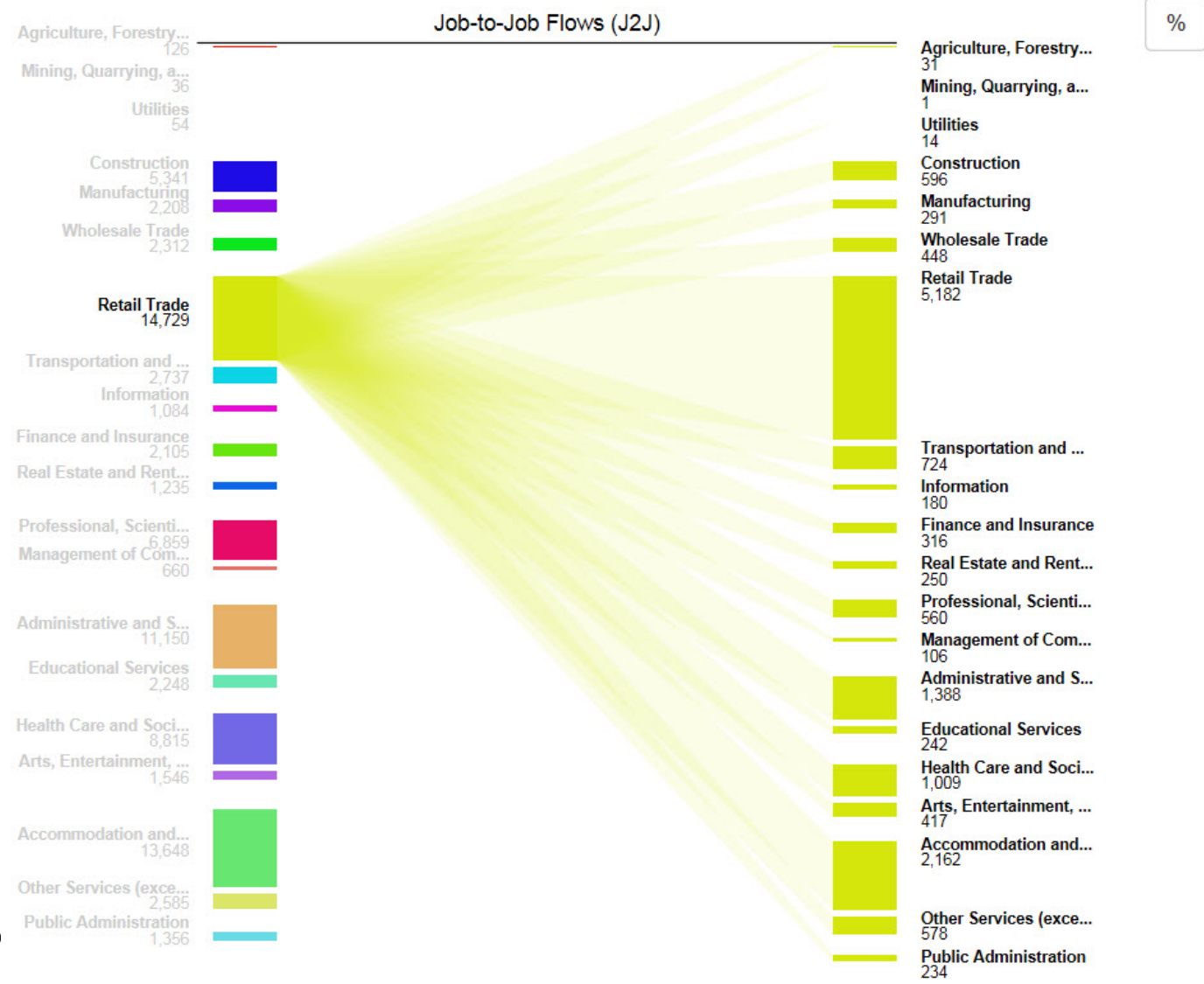
LEHD: Job to Job Flows

Maryland: 2015 Q2



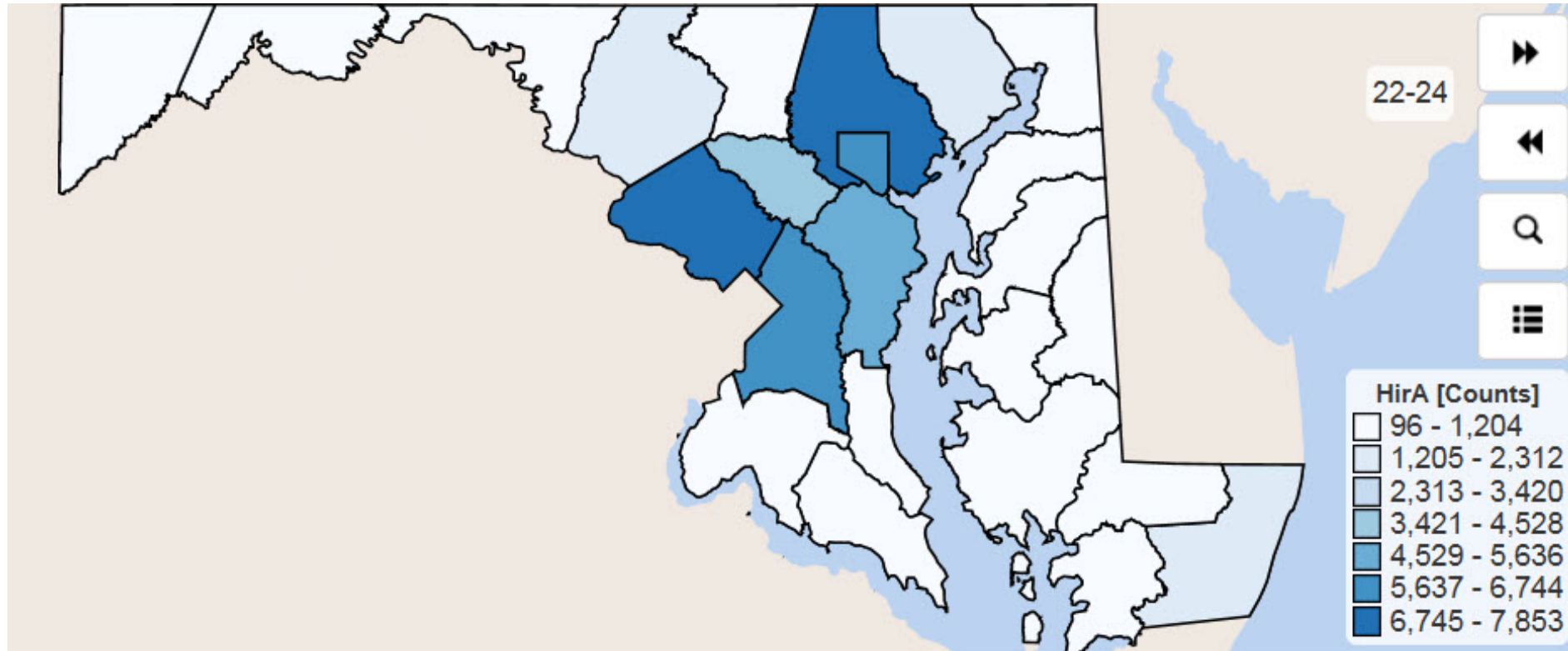
LEHD: Job to Job Flows

Maryland: 2015 Q2

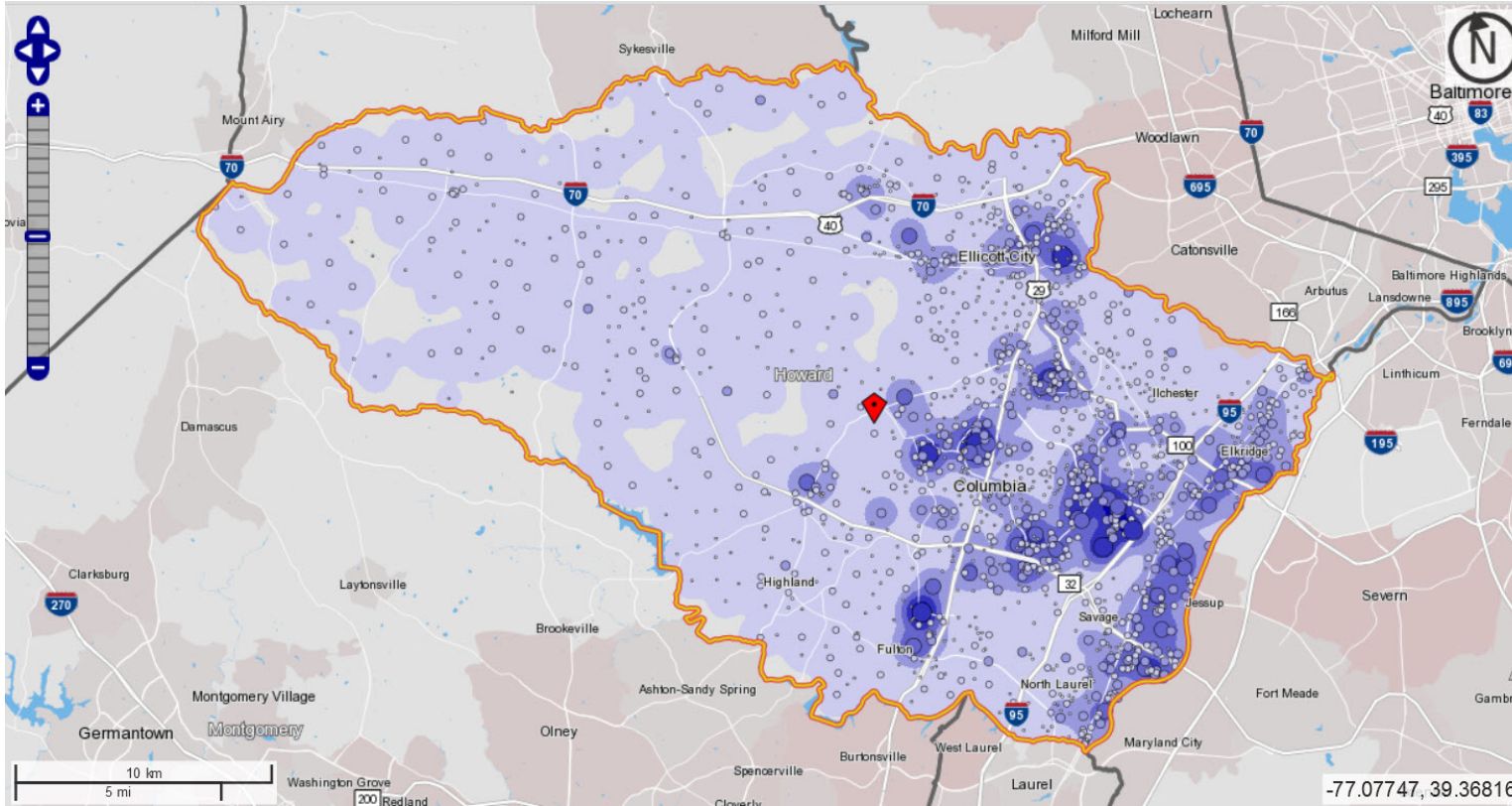


Quarterly Workforce Indicators

Number of New Hires, Ages 22 to 24, in Maryland, 2017 2Q



On the Map



Work Area Profile Report

Total Primary Jobs

2015	
Count	Share
161,630	100.0%

Jobs by Worker Age

2015	
Count	Share
Age 29 or younger	34,555 21.4%
Age 30 to 54	91,094 56.4%
Age 55 or older	35,981 22.3%

Jobs by Earnings

2015	
Count	Share
\$1,250 per month or less	25,037 15.5%
\$1,251 to \$3,333 per month	43,382 26.8%
More than \$3,333 per month	93,211 57.7%

Jobs by Worker Educational Attainment

2015	
Count	Share
Less than high school	13,644 8.4%
High school or equivalent, no college	29,773 18.4%
Some college or Associate degree	37,260 23.1%
Bachelor's degree or advanced degree	46,398 28.7%
Educational attainment not available (workers aged 29 or younger)	34,555 21.4%

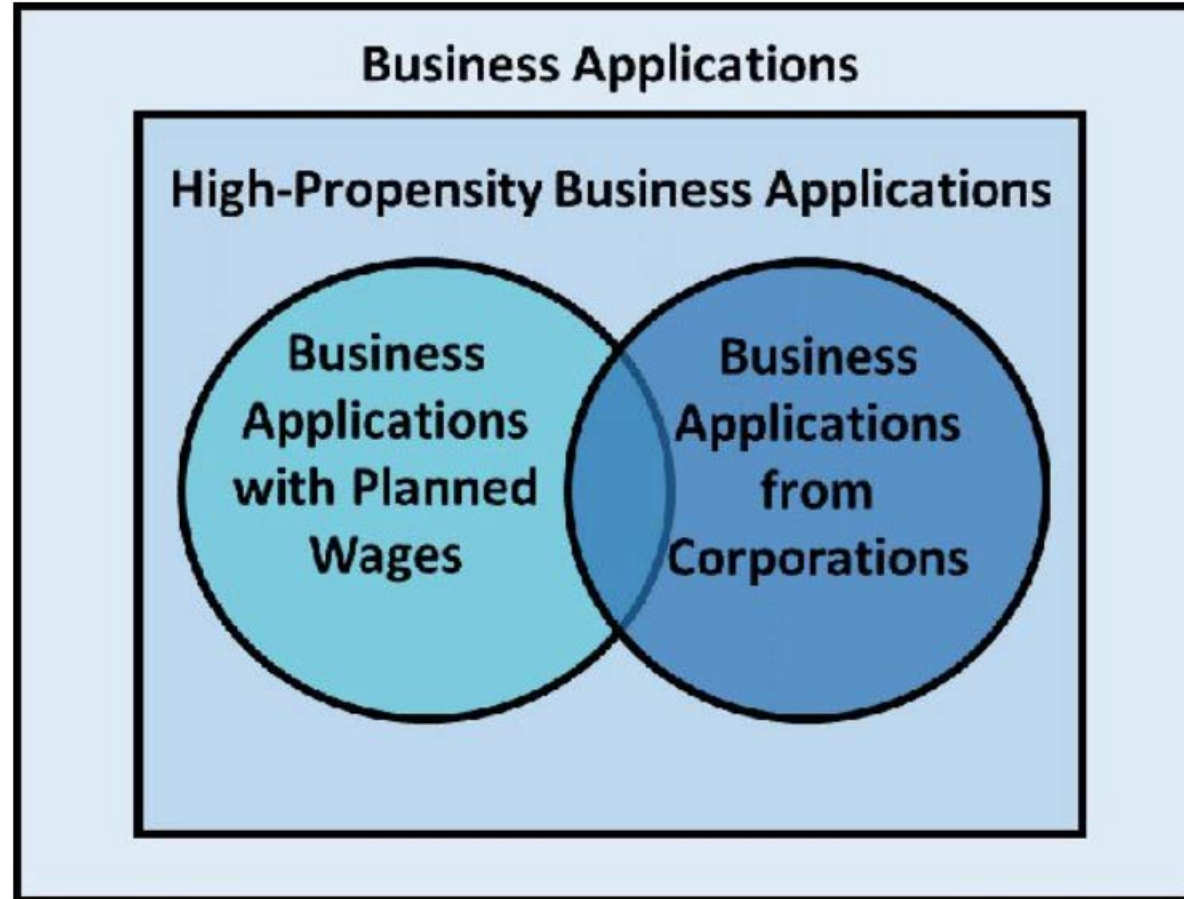
Jobs by Worker Sex

2015	
Count	Share
Male	87,039 53.9%
Female	74,591 46.1%

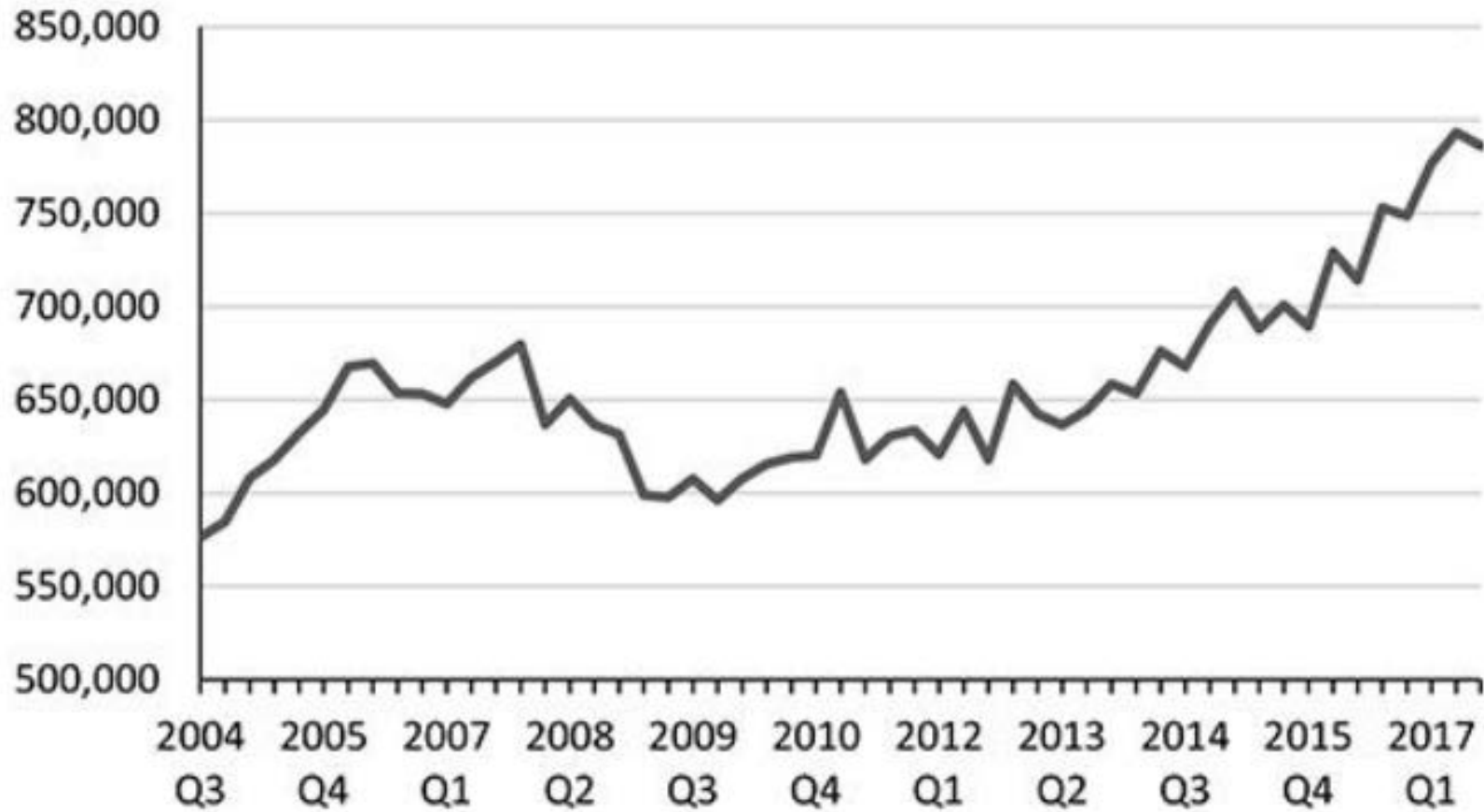
Jobs by NAICS Industry Sector

2015	
Count	Share
Agriculture, Forestry, Fishing and Hunting	291 0.2%
Mining, Quarrying, and Oil and Gas Extraction	53 0.0%
Utilities	370 0.2%
Construction	10,410 6.4%
Manufacturing	7,221 4.5%
Wholesale Trade	14,422 8.9%
Transportation and Warehousing	4,489 2.8%
Information	3,786 2.3%
Finance and Insurance	7,147 4.4%
Real Estate and Rental and Leasing	2,924 1.8%
Professional, Scientific, and Technical Services	31,787 19.7%
Management of Companies and Enterprises	3,337 2.1%
Administration & Support, Waste Management and Remediation	10,744 6.6%
Educational Services	12,502 7.7%
Health Care and Social Assistance	14,476 9.0%
Arts, Entertainment, and Recreation	2,524 1.6%
Accommodation and Food Services	10,166 6.3%
Other Services (excluding Public Administration)	4,132 2.6%
Public Administration	4,740 2.9%

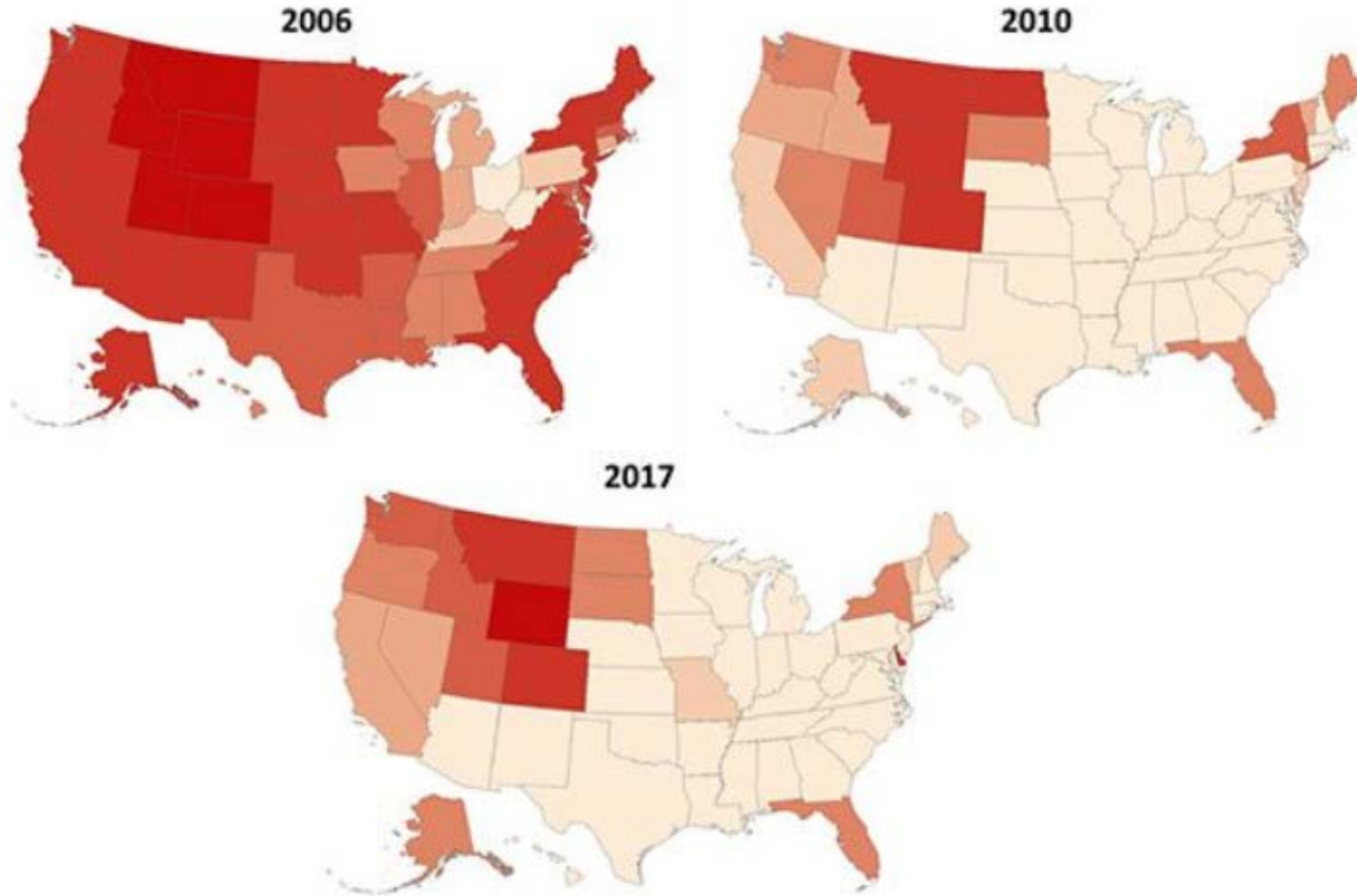
Business Formation Statistics



Business Applications (BA), seasonally adjusted



Business Formations within 4 Quarters (BF4Q) by State - Per 1,000 People



The number of business formations per 1,000 people:

< 0.25	0.25 - 0.27	0.27 - 0.29	0.29 - 0.31	0.31 - 0.33	0.33 - 0.50	> 0.50
--------	-------------	-------------	-------------	-------------	-------------	--------

Annual Business Survey

- Combines three Census Bureau surveys:
 - Five-year Survey of Business Owners for employer businesses
 - Annual Survey of Entrepreneurs
 - Business Research & Development and Innovation Survey for microbusinesses
- Measures:
 - Owner and business demographics
 - Financing activities
 - Innovation practices
- Will rotate content to cover different relevant business topics

Access to Microlevel Data

- Synthetic Longitudinal Business Dynamics Dataset (experimental)
- 29 Federal Statistical Research Data Centers across the US
 - Partners with over 50 different universities, non-research organizations, and government agencies
 - Access to data from different agencies
 - Census Bureau
 - Bureau of Labor Statistics
 - National Center for Health Statistics

US Bureau of Labor Statistics

Jobs, Entrepreneurship, and Firms

- Business register
- Consistency between short-term and macroeconomic data
- Consistency across sectors
- Transparency and consistency in concepts and definitions
- Jobs, entrepreneurship, and firms



US Bureau of Labor Statistics

Consistency: short-term and macro

- Consistency between short-term or survey data and census data is achieved by:
 - ▶ Using the QCEW as a sampling frame for most BLS business surveys
 - ▶ ...and for post-survey / post-stratification alignment



US Bureau of Labor Statistics

Business Register

- Quarterly Census of Employment and Wages
 - ▶ Report of number of employees and total wages paid for each worksite reporting to the mandatory state unemployment insurance program
 - ▶ A quarterly census covering 97 percent of employment in the US
 - ▶ Approaching 10 million worksite reports per quarter
 - ▶ Serves as a source of cross-sectional and longitudinal published data, and as a sampling frame for BLS business surveys



US Bureau of Labor Statistics

Consistency: across sectors

- Consistency across sectors is achieved by most BLS surveys – by covering the full US nonfarm economy. For example:
 - ▶ BLS' Current Employment Statistics survey utilizes a stratified probability sampling design with strata defined by:
 - State, Industry groupings, Employment size class
 - ▶ BLS' Job Openings and Labor Turnover Survey utilizes a stratified probability sampling design with strata defined by:
 - Region, Industry groupings, Employment size class



US Bureau of Labor Statistics

Transparency

- BLS strives for transparency of methodology and results
- Many resources on the BLS website to explore methods
- Every program has a help line, either phone, web form, or both to assist data users in obtaining data or in better understanding the data



US Bureau of Labor Statistics

About Jobs

- Quarterly Census of Employment and Wages – employment, quarterly wages
- Current Employment Statistics – employment, hours, earnings
- Job Openings and Labor Turnover – openings, hires, separations, quits, layoffs and other discharges



US Bureau of Labor Statistics

And more about jobs

- Current population survey – unemployment, labor force, demographics
- Occupational Employment Statistics – employment, wages by detailed occupation
- National Compensation Survey – employment, wages, benefits
- Labor Productivity and Costs



US Bureau of Labor Statistics

Entrepreneurship

- One measure of entrepreneurship is the creation of new firms
 - ▶ And the employment and wages associated with that creation
 - ▶ And the survival rates of those firms
 - ▶ The Quarterly Census of Employment and Wages data can be used to measure these



US Bureau of Labor Statistics

Firms

- BLS' Quarterly Census of Employment and Wages can produce data both at the worksite level and at the firm level
 - Firm here is defined as a group of establishments with the same federal Employer Identification Number (EIN)



US Bureau of Labor Statistics

Matching

- BLS' Quarterly Census of Employment and Wages can be matched against other datasets that include appropriate identifiers – again creating consistency across data products
 - ▶ Past example is matching to IRS public dataset of nonprofit firms, allowing BLS to publish data by state and industry by for-profit and not-for-profit comparison
 - ▶ Current work includes matching to Bureau of Economic Analysis' data on Foreign Direct Investment, to produce additional detailed industry and occupational data on firms with foreign investment

